

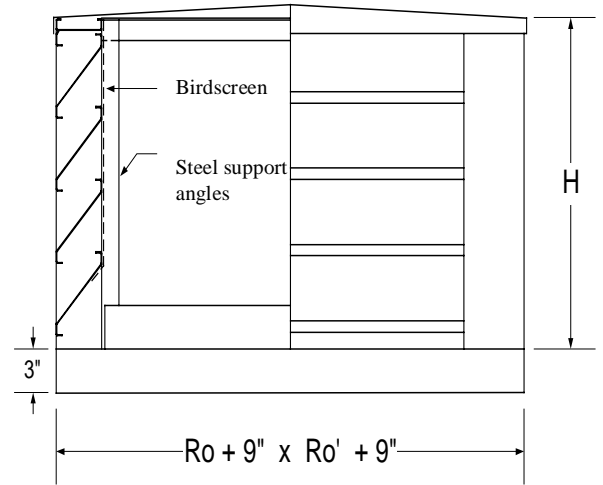


METAL FORM MANUFACTURING CO., INC  
 5960 WEST WASHINGTON STREET  
 PHOENIX, ARIZONA 85043  
 TELEPHONE: 602-233-1211 FAX: 602-233-2033  
 WEBSITE ADDRESS: WWW.MFMCA.COM

# Model MFV-64 Penthouse Boxed Corner Galvanized Steel

## Specifications

- Frame:** 18ga. galvanized steel channel frame.
- Blades:** 18ga. galvanized steel.
- Screen:** 1/2" x 1/2" x 19ga. galvanized steel.
- Roof:** 18ga. galvanized steel, reinforced with angle bracing where required.
- Corners:** 18ga. galvanized steel.
- Finish:** Standard mill.
- Minimum size:** 12"Ro x 12"Ro<sup>1</sup> x 12"h.



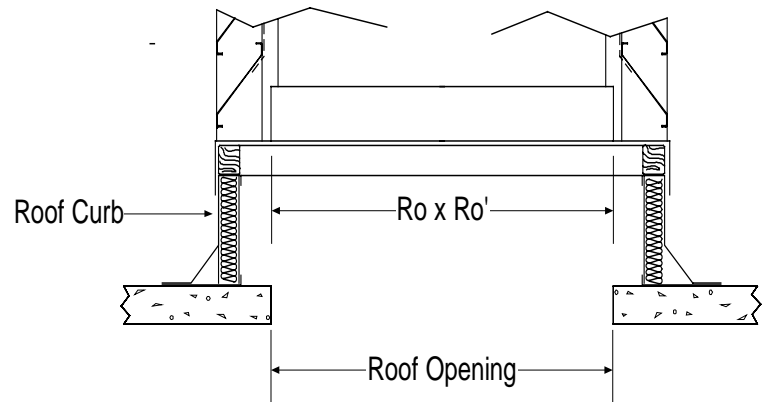
45 Degree Plain  
 Blade Shown  
 (Model MFL-24)

## Options

- Screens - Many variations of screens are available, consult factory.
- Insulation on underside of penthouse top.
- Hinged top.
- Filter racks (specify depth).
- Filters (specify depth).
- Finishes.

## Notes

1. Ro x Ro<sup>1</sup> are roof opening dimensions.
2. Refer to appropriate louver submittal for standard construction specifications.
3. Box corner penthouses are available using Metal Form's standard 2", 4", 6" deep MFL Series fabricated steel louvers. Curb cap dimensions will change accordingly, depending on louver style.
2. Metal Form reserves the right to improve design or change specifications at any time.



Curb O.D. = Ro + 8" and Ro' + 8"

Tag	Qty.	Width	Length	Height	Options	Finishes/Specify	Remarks

**Project:** \_\_\_\_\_  
**Architect:** \_\_\_\_\_  
**Engineer:** \_\_\_\_\_  
**Contractor:** \_\_\_\_\_